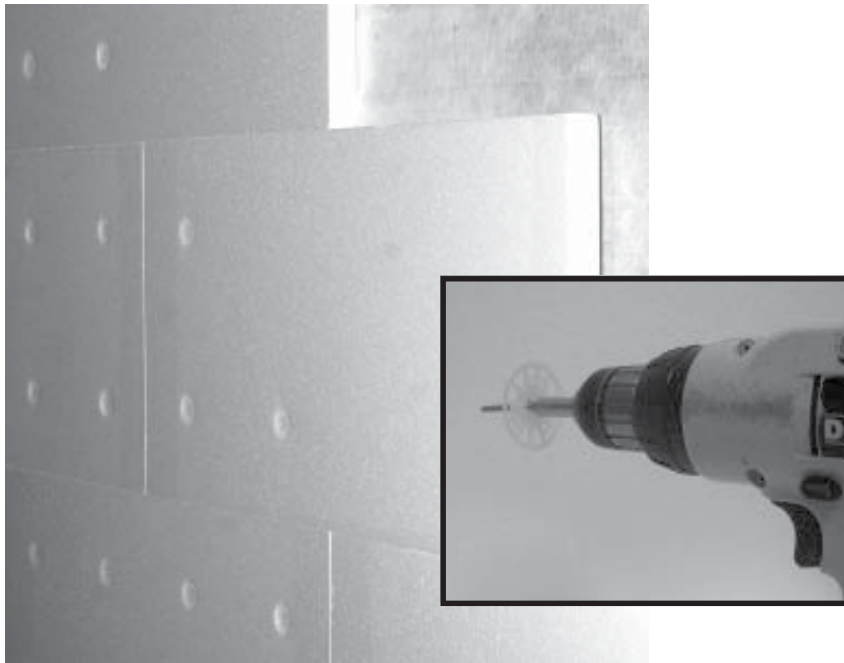


Anchor III Plastic Washers for EIFS



The Anchor III Plate is designed for the mechanical attachment of Expanded Polystyrene Insulation Board (EPS) when used in conjunction with an Exterior Insulation and Finish System (EIFS). The 2" diameter Anchor III Plate stands 3/4" tall. To reduce thermal bridging, a thermal space between the fastener and coating is created by the 3/8" recessed screw chamber and the finger closures. The large open window areas provide the adhesive base coats a larger area to key into the unique beveled and slender spokes and provide a more positive attachment to the EPS insulation. The Anchor III Plate is made of a Hi-grade Polypropylene Plastic with UV inhibitors.

Anchor III Plate (ONLY)	Item No. 16-30000	
--------------------------------	-----------------------------	--

Wood	Order No.	Item No.	Insulation Thickness	Assembled Anchor III Plate with Highly Coated Exterior Screw Fastener	Quantity per Box
	W 1	31-30158	1"	#6 X 1 5/8" w/Anchor III Plate	1000
	W 2	31-30002	1-1/2"	#7 X 2" w/Anchor III Plate	1000
	W 3	31-30212	2"	#8 X 2 1/2" w/Anchor III Plate	1000
	W 4	31-30003	2-1/2"	#8 X 3" w/Anchor III Plate	1000
	W 5	31-30004	3"	#10 X 4" w/Anchor III Plate	*500
	W 6	31-30005	4"	#10 X 5" w/Anchor III Plate	*500
Longer Length Anchor III Plates Available Upon Request Call For Details					

Steel	Order No.	Item No.	Insulation Thickness	Assembled Anchor III Plate with Highly Coated Exterior Screw Fastener	Quantity per Box
	S 1	31-33158	1"	#6 X 1 5/8" w/Anchor III Plate	1000
	S 2	31-33002	1-1/2"	#7 X 2" w/Anchor III Plate	1000
	S 3	31-33258	2"	#8 X 2 5/8" w/Anchor III Plate	1000
	S 4	31-33003	2-1/2"	#8 X 3" w/Anchor III Plate	1000
	S 5	31-33004	3"	#10 X 4" w/Anchor III Plate	*500
	S 6	31-33005	4"	#10 X 5" w/Anchor III Plate (does not include sheathing thickness)	*500
Longer Length Anchor III Plates Available Upon Request Call For Details					

Masonry	Order No.	Item No.	Insulation Thickness	Assembled Anchor III Plate with Highly Coated Exterior Screw Fastener	Quantity per Box
	M1	44-34175	1"	1-3/4" tapcon w/Anchor III Plate	1000
	M2	44-34214	1-1/2"	2-1/4" tapcon w/Anchor III Plate	1000
	M3	44-34275	2"	2-3/4" tapcon w/Anchor III Plate	1000
	M4	44-34314	2-1/2"	3-1/4" tapcon w/Anchor III Plate (Includes 5 drill bits per 1,000 plates)	1000



Authorized Distributor

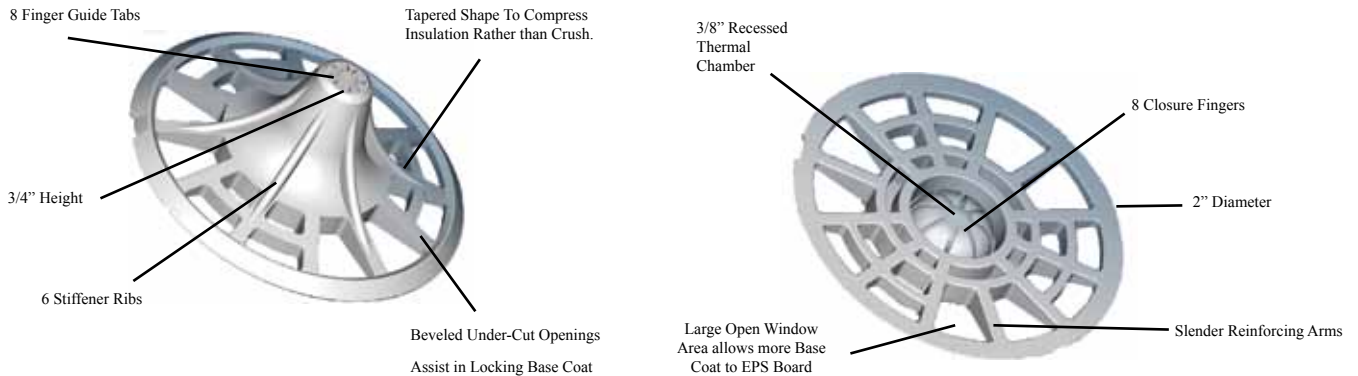
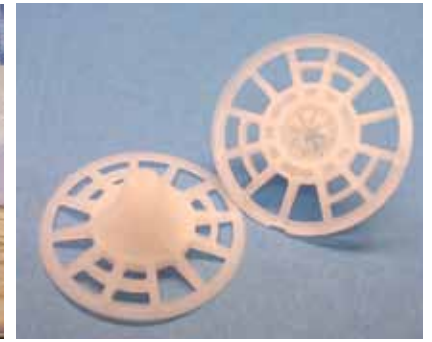
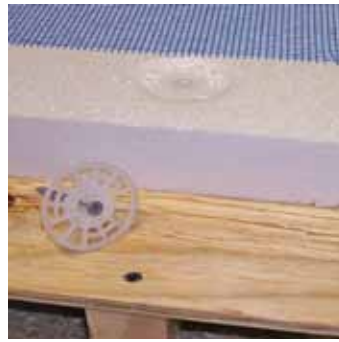


www.warehousebay.com

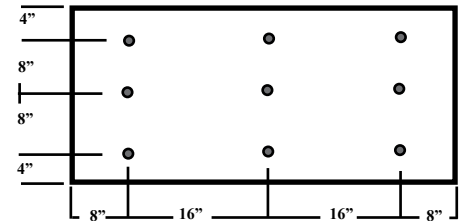
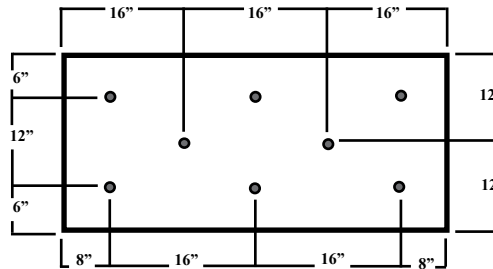
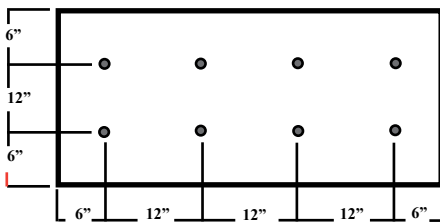
Call toll free 7am - 5pm est, Monday to Friday

1-866-850-8544

Effective Date March 15, 2008



Fastening Pattern



These suggested fastening patterns are typical for the attachment of EPS insulation used with EIFS PB Systems. Consult your EIFS Manufacturer for their particular requirements if different than above and for use in conjunction with adhesives.

Fastener Pullouts

Pullout Wood	2 x 4 Redwood	2 x 4 Fir	1 x 3 Clear Pine	1/2" Plywood	3/4" Particle Board
Ultimate Loads (lbs)					
#7 Wood Fasteners	258	430	291	250	227
#8 Wood Fasteners	500	528	396	246	324

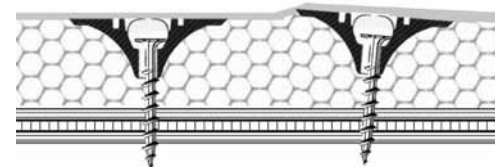
Pullout Steel	12 ga.	14 ga.	16 ga.	18 ga.	20 ga.	22 ga.
Ultimate Loads (lbs)						
#6 Self Drilling	1165	906	664	417	283	215
#7 & #8 Self Drilling	1445	708	506	414	256	176

Pullout Light Steel	20 ga.	22 ga.	24 ga.	26 ga.
Ultimate Loads (lbs)				
Wood/Light Metal Hi-Lo	277	244	178	129

Pullout Masonry	1" Penetration	1-1/4" Penetration	1-1/2" Penetration
Ultimate Loads (lbs)			
Concrete	380	580	830
Hollow Block in solid material	229	416	452

Fastener Placement

Correct Incorrect



Corrosion Data

Salt Spray (ASTM B117) 1000 Hours +

Kesternich (DIN 50018 2.0L) 24 Cycles

Screw Coating:

Metallic Zinc Layer with an Exterior Chemical Coating Layer and a Unique Grabbergard Finish or Equal.