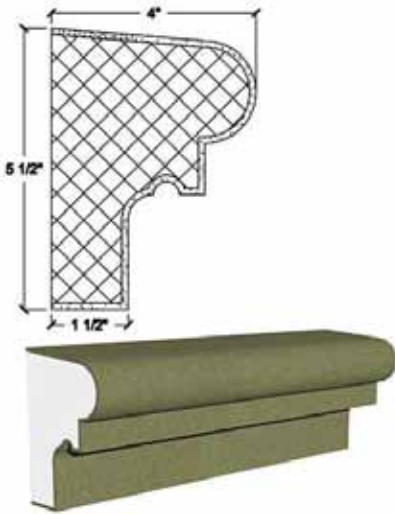


## Pre-Coated Architectural Foam Shapes



**Surface must be clean and dry, free of loose material or any foreign material.**

### Standard Procedure for moulding Installation

1. Dry fit and/or Cut on site the moulding as per the architectural drawings and existing structure.
2. Apply adhesive of system manufacture to the back of the moulding in a vertical pattern, using 3/8" notched trowel. If skinning occurs on adhesive, scrape off and replace it with fresh adhesive before installing the moulding.
3. Press the moulding into place use; use temporary mechanical fastener as per selected manufacturers system to secure moulding while the adhesive cures.
4. Remove excess adhesive (if any) along the moulding before curing.
5. Refer to System details and Exhibits, follow step by step.

### Cementitious acrylic adhesive:

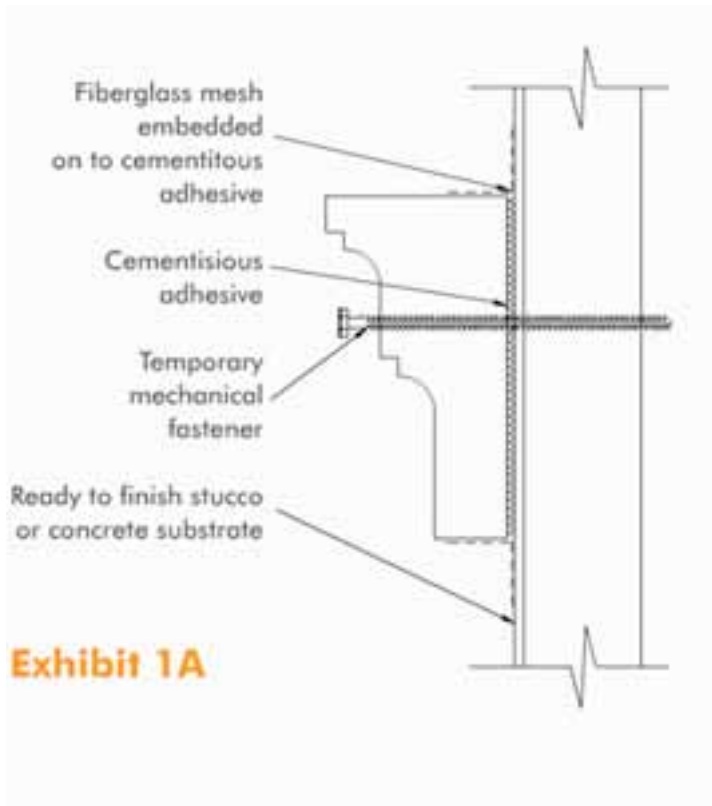
Mix and apply EIFS manufacturer's adhesive to the entire back surface of the Architectural Detail using a 3/8" notched trowel. Immediately, while the adhesive is still wet, apply by firmly pressing and properly positioning the shape onto the substrate. Large shapes require temporary mechanical fasteners as a support system until the adhesive sets. Allow adhesive to set for 24 hours



### Spray Foam Adhesive

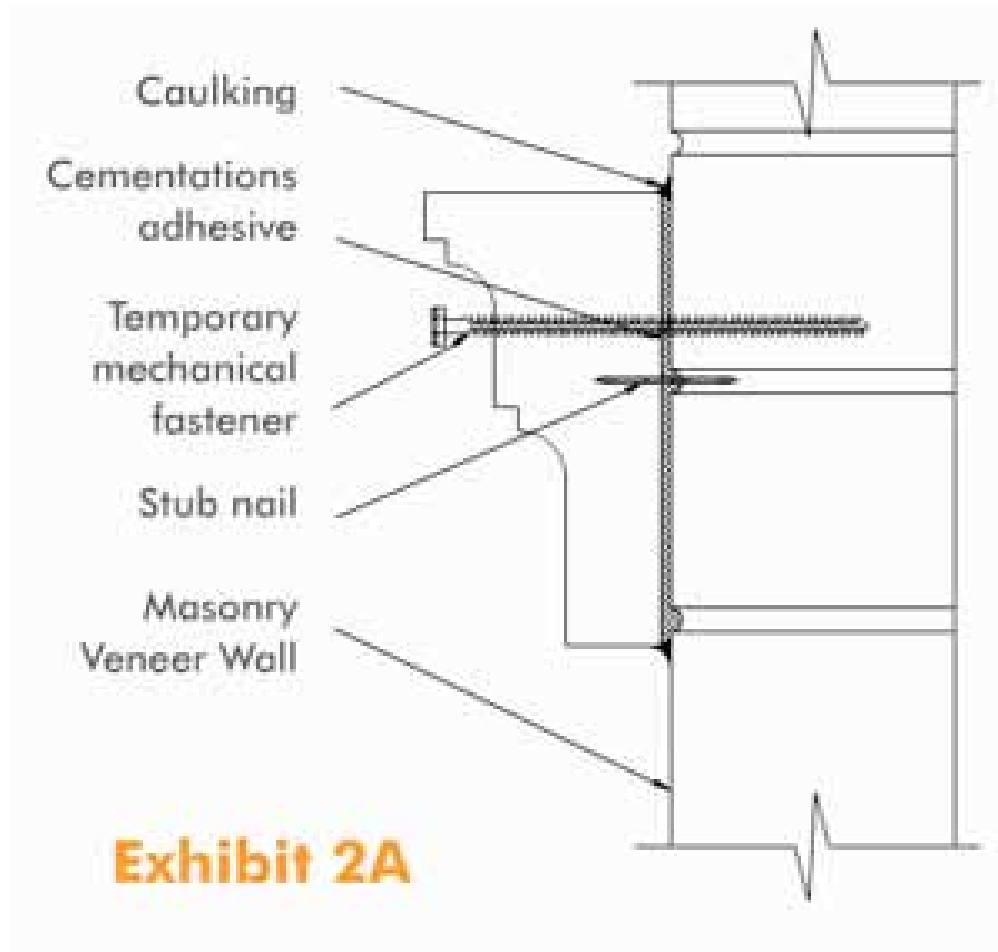
When using a one-component polyurethane based foam adhesive. Apply sprayed foam adhesive vertically or in long sloping lines on the pre-coated foam shape. Avoid looping the adhesive and continuous horizontal runs of the adhesive which could create pockets that may accumulate any incidental water. This is a fast application. Set panel in place within 2 minutes and support with mechanical fasteners until the adhesive cures. The adhesive is tack-free in 5 minutes, cuttable in 1 hour and fully cures in 12 - 24 hours.





## Installation

1. Follow steps 1 to 5
2. Spread evenly a layer of cementitious over the moulding and the substrate at least 2" each part.
3. Embed a 4" fiberglass mesh equally divided onto the cementitious, smoothen the surface.
4. Allow for curing time.
5. Sand all surfaces and joints to a smooth finish.

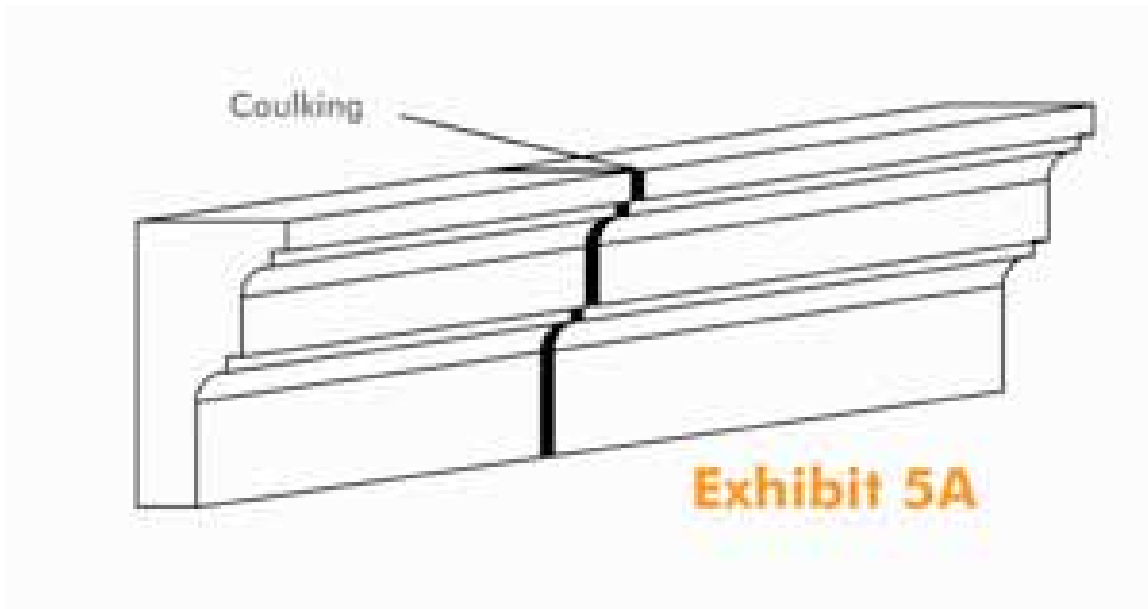


## Masonry Detail

Pre-coated Architectural Mouldings are to be used above or at the bottom of an opening, it should not be installed over weep holes. Refer to the Regional Building Code and/or to the National Building Code for clearance.

### EXHIBIT 2.A CEMENTITIOUS AND CAULKING

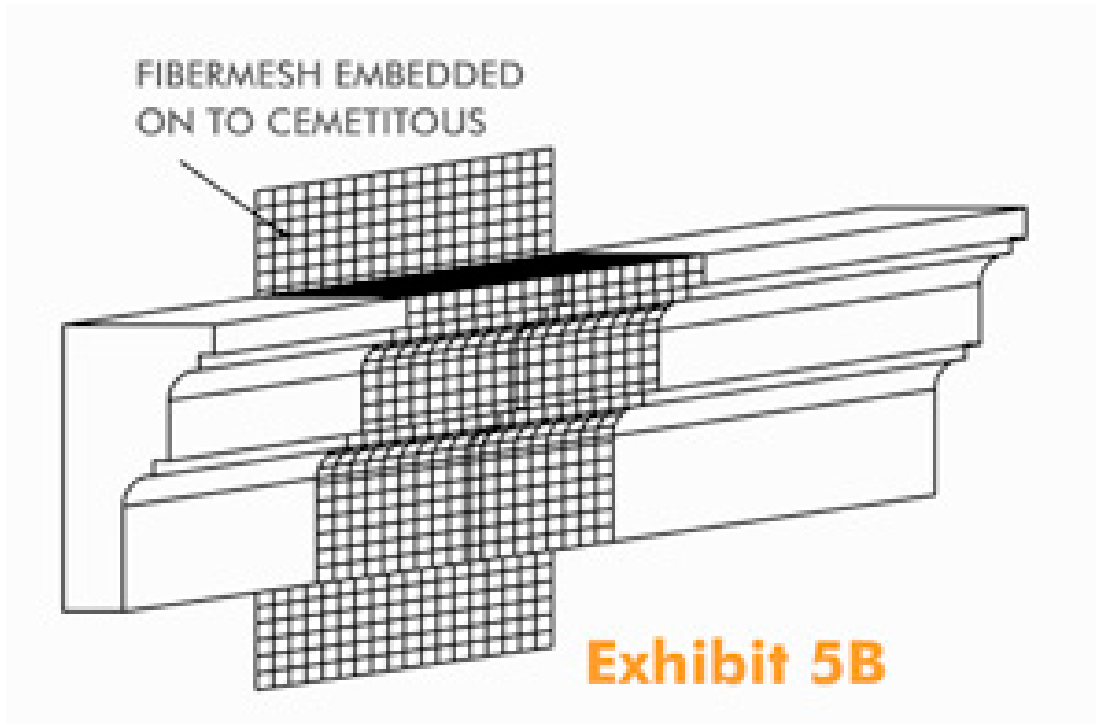
1. Follow steps 1 to 5.
2. Apply caulking at the joint or the moulding to the substrate.
3. Allow for curing time.



#### Moulding to Moulding Detail:

##### Exhibit 5.A Caulking.

1. Install mouldings according to previous exhibits.
2. At the junction of the mouldings leave a gap of no more than 13mm.
3. Complete installation of the mouldings.
4. After the coatings have cured inset a Backer Rod into the gap between the mouldings.
5. Cover all joints with caulking



#### Moulding to Moulding Detail:

##### Exhibit 5.B Base coat and fibermesh.

1. Install mouldings according to previous exhibits.
2. Mouldings should be installed tight against each other with space not exceeding 1/16" (1.5mm)
3. Apply a layer of about 1/8" (3mm) thick of base coat over the miter joint per minimum 2" on each side.
4. Embed a 4" mesh onto the base coat and smoothen the surface.
5. Allow time to cure.
6. Sand all joints to a smooth finish.